



BRNO-BYSTRC

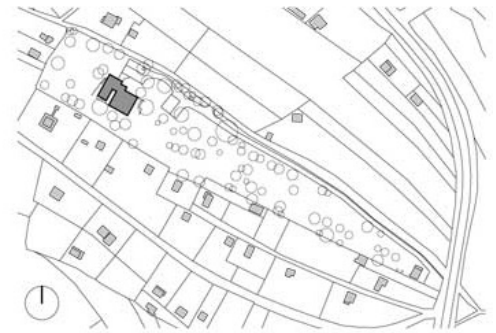
TOMÁŠ BERÁNEK, ROSTISLAV JAKUBEC, TOMÁŠ INDRA,
MONIKA ORAVCOVÁ, DANIELA ŠTEFKOVÁ / ATX ARCHITEKTI

A large estate is located mostly in recreational area at periphery of Brno city (Czech Republic). It is sloping land with high full-grown trees and view of nearby dam. By surrounding environment is formed expression, used materials and operation concept. A house shouldn't change the place, but naturally complete it and use its quiet position.

Two-storey house is situated at the edge of ground turn, which reduces its volume and creates natural screen for half-embedded first floor. Upper floor is surrounded by peel of gentle counter roof, blending with the north facade and turning on terrace. From the north side the parcel of land is lined by public road. The house is facing the road by its single-storey facade. It is plastic shaped and broke by main house entrance.

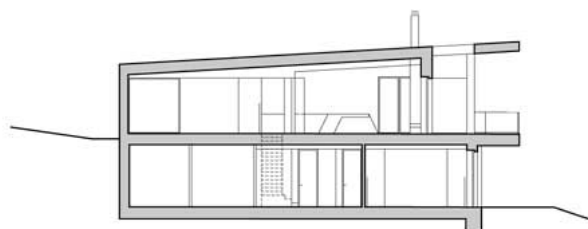
The entrance hall is followed by living spaces, pool and terrace, which lines upper floor from three sides. Peripheral walls are lightened by large glass surfaces. The first floor is screened by ground cut and shadowed by terrace overlap. It provides a private environment for placing bedrooms, bathrooms and walk-in closet with direct connection with land and way out to the garden.

The building is built as monolithic reinforced concrete with ventilated sandwich shell with final surface from wood, titan-zinc and natural stone. The house is power by heat pump (deep well) and water is delivered from own water wells. Control of the house is executed by intelligent system Tecomat Foxtrot, controlled by user from application on iPad.



situation

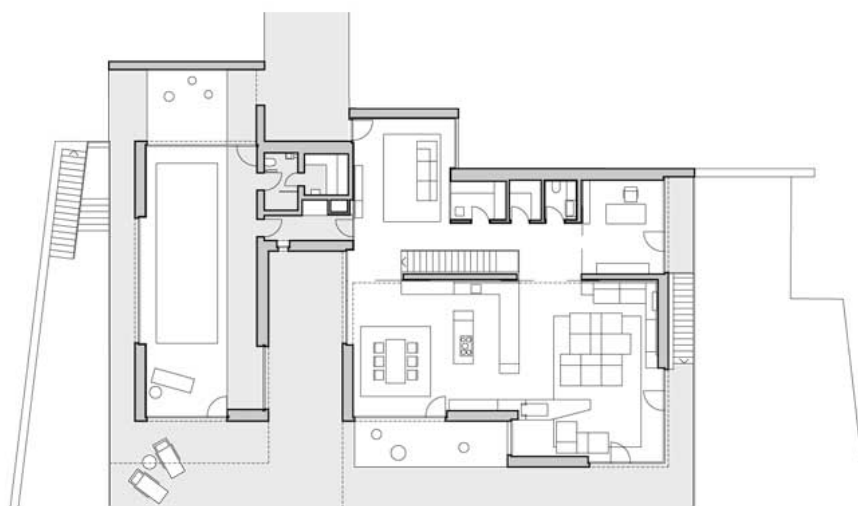




side view

English House above the Dam, Brno-Bystrc

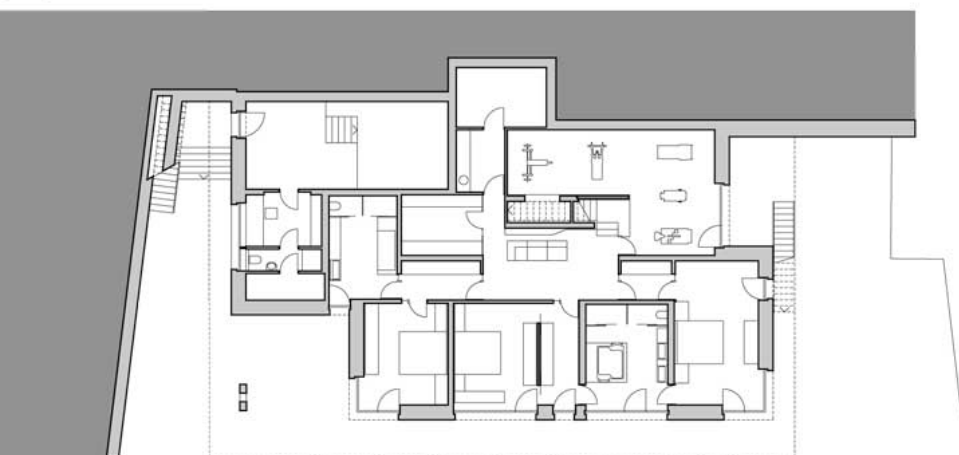
This two-storey house is located on the edge of a field break, which reduces its volume and creates a natural screen for the semi-recessed bottom floor. The top floor is encircled by a single pitched roof envelope, which flows down along the northern facade and turns toward the terrace. The north boundary is demarcated by a public service road towards which the house is turned with its single-storey facade. This facade is plastically shaped and broken by the main entrance opening. The main living areas, swimming pool and terrace are linked to the entrance hall. The terrace skirts the top floor on three sides. The perimeter walls are lightened by large glazed surfaces. The bottom floor is sheltered by a terrain cut and shaded by the terrace overhang. It provides a private environment for the location of bedrooms, bathrooms and wardrobes, with a direct link to the ground and access to the garden. The building is built as a monolithic reinforced concrete structure with a vented sandwich facade system and a final wooden, titanzinc and natural stone surface.



second floor



ground floor

**DŮM NAD PŘEHRADOU
BRNO-BYSTRC****KLIENT** soukromá osoba**AUTOŘI** Tomáš Beránek, Rostislav Jakubec,
Tomáš Indra, Monika Oravcová, Daniela Štefková
/ ATX Architekti, s. r. o.**SPOLUPRÁCE** prováděcí projekt: František
Jakubec, Jiří Janoušek, Jitka Putnová; statika:
Pavel Hladík, Ivo Lukačovič; požární ochrana: Jana
Gálová; VZT, UT: Josef Bahr, Jiří Svozil, Lenka
Marková; elektro a řízení: Jan Klimeš, Jaromír
Kyller; ZTI: Libor Švarzberger**PLOCHA POZEMKU** 14 492 m²**OBESTAVĚNÝ PROSTOR** 1 715 m³**ZASTAVĚNÁ PLOCHA** 326 m²**UŽITNÁ PLOCHA** 490 m²**OBYTNÁ PLOCHA** 320 m²**DODAVATEL ŘÍDÍCÍCH SYSTÉMŮ** Insight Home a.s.**REALIZACE** 2011



CONTROL SYSTEMS

TECOMAT FOXTROT AND INHOME AMX FOR THIS HOUSE

For control all technologies of this stylish residence is used control system **Tecomat Foxtrot** of Czech company Teco a.s., which develops and manufacture control systems of category PLC for machines, processes, buildings and transport.

Tecomat Foxtrot is connected with multimedia system **inHome AMX** from Prague's company Insight Home, a.s., which operates in Czech Republic, Slovakia and Russia.

The architect of this house chose this reliable control system because of its outstanding features: highly dependable, resistant and by its openness against the latest technologies and other sub systems it may control all the technologies in the buildings. And it is even ready to integrate new Technologies in the future, which will appear. By this, the installation of system is becoming a timeless investment.

COMPONENTS OF AUTOMATION

Interior and exterior lighting

There is a control of separate lights, group of lights, light scenes and scenarios. Selected loops of lights are controlled automatically according to signals from movement detectors (PIR) OR according to sunrise and sunset (data from weather station).

Shading of the building

is executed by exterior blinds and there is also a blind covering the pool outside the house. Control of the blinds is automated according to temperature, day time, sun shine etc., but of course, there is a possibility to control all manually according to resident wishes.

Heating, ventilation, air-conditioning

The residence is equipped by warm water floor heating system, which keep thermal comfort of each room according to measured room temperature and preset time temperature programme or according to pre-programmed modes: Presence, Absence, Decline. Pleasant temperature during hot summer days may be again individually set or programmed. It is executed by air-condition units, controlled again by Foxtrot central module. In room with pool there are also sensors of condensation, monitoring dew point, as there is not too much condensation to damage the building. System operates the active ventilation system so controls the value of condensation in right value.

Security

The residence is equipped by certified security system Paradox EVO and camera system, connected to control system Foxtrot.

For example, while leaving, the system switch off selected appliances, close the blinds, check the open windows, switch of the lights, heating system run Decline mode and the house is automatically secured.

Distribution of Audio and Video

inHome AMX is a top system for Audio/Video distribution in the highest quality. Thanks to digital matrix switches AMX ENOVA, it is possible to watch premium satellite channels on any of five TVs, also Blue-ray movies, terrestrial broadcasting, or to choose a movie or home video from the central data storage. The house is equipped by 12 audio zones enabling to listen to radio stations or favourite interpreters from home music library.

Comfort

All technologies and audio/video may be controlled conventionally – for example by wall switches or buttons, and also comfortably by iPads or iPhones. Thanks to remote access, system offers comfort control of all the house from anywhere where is internet connection.

Remote management

All data and control may be transferred to a reception or dispatching room, where we may operate other services above them, for example monitoring. This use is advantageous at flat or residential complexes, where Tecomat Foxtrot may control central or individual technologies in the whole complex.



- 1 Wall docking station for iPad
- 2 Central module Tecomat Foxtrot
- 3 Remote control AMX R4
- 4 Kitchen and living room - lights control
- 5 Entrance hall - iPad, security of the house

Petr Ovčáček
Teco, a.s.
+420 602 264 465
ovcacek@tecomat.cz
www.tecomat.cz

Jan Průcha
Insight Home, a.s.
+420 603 525 050
jan.prucha@InsightHome.eu
www.InsightHome.eu

